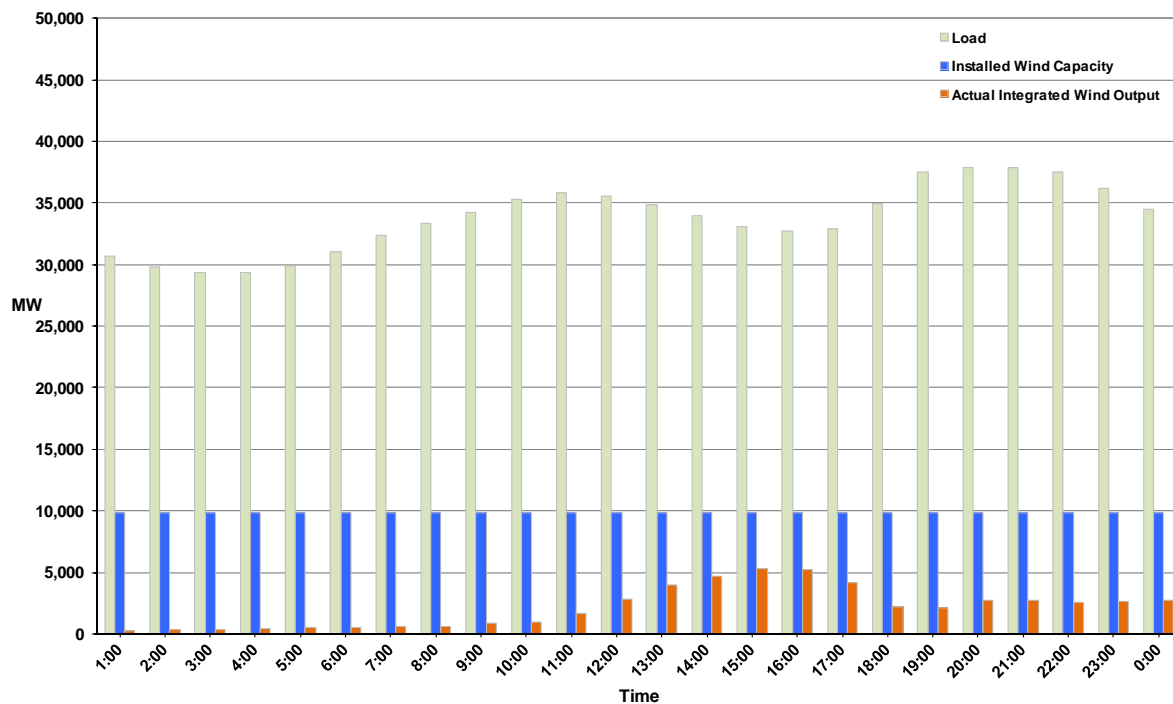




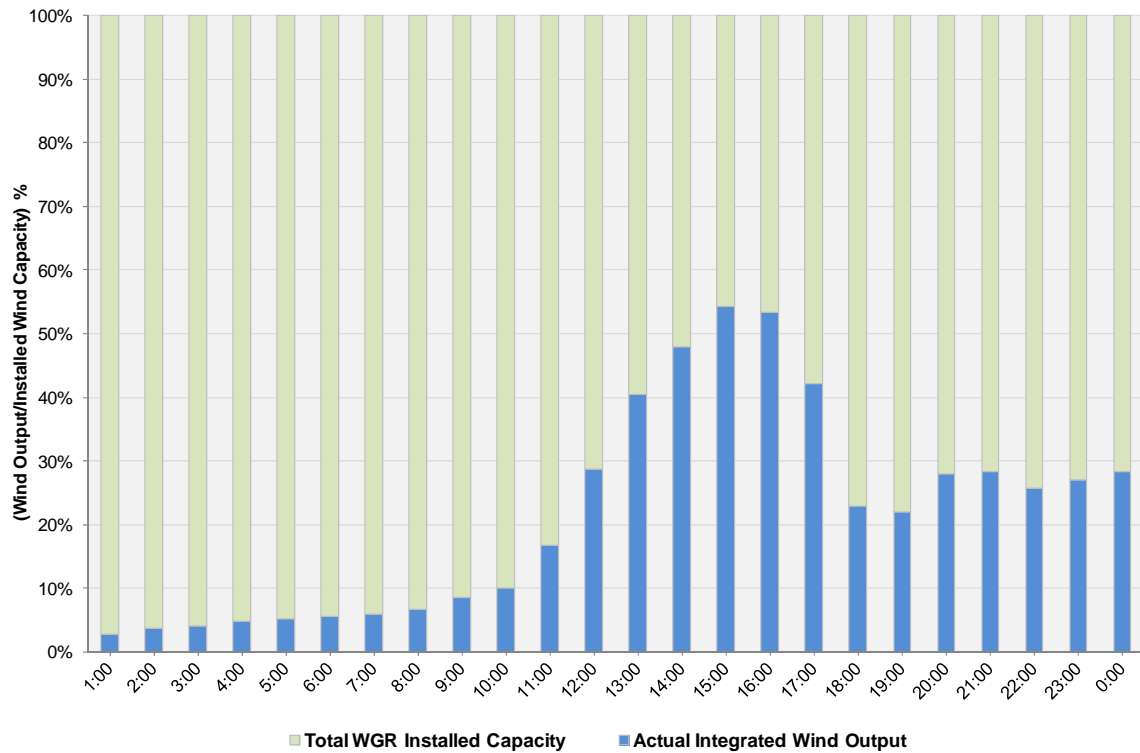
## ERCOT Grid Operations Wind Integration Report: 12/26/11

Peak Load	37,868 MW
Load Peak Hour (HE)	21
Wind over Peak	2,775 MW
Wind Record 10/07/11	7,400 MW
Max Wind Value	5,509 MW
Wind Peak Time	14:48
Wind Integration %	16.73%

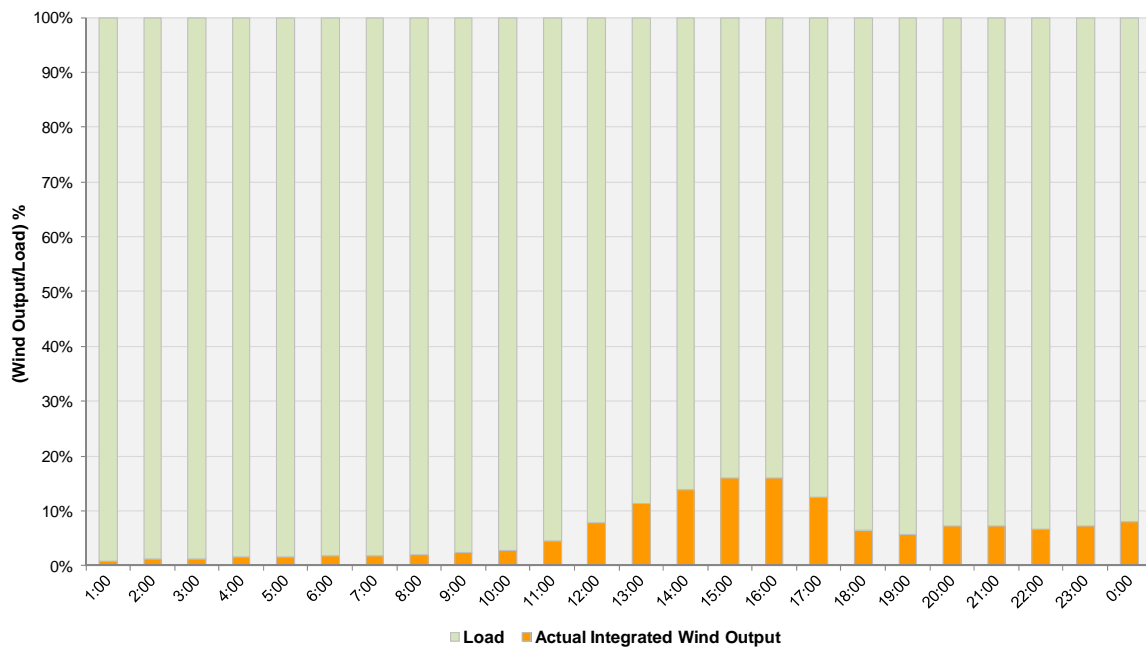
Hourly Average Actual Load vs. Actual Wind Output  
12-26-2011



**Actual Wind Output as a Percentage of the Total Installed Wind Capacity**  
**12-26-2011**



**Actual Wind Output as a Percentage of the ERCOT Load**  
**12-26-2011**



ERCOT Load vs. Actual Wind Output 12/19/2011 - 12/26/2011

